



BUSHTEC

SAFARI

DESIGNED TO IMPRESS. BUILT TO LAST.





BUSHTEC SAFARI

DESIGNED TO IMPRESS. BUILT TO LAST.



Index

04	INTRODUCTION
05	OUR PRESENCE
08	LUXURY TENT RANGE
35	CUSTOMIZATIONS
37	ENDLESS OPPORTUNITIES
45	PORTFOLIO
53	TENT STRUCTURE
55	SALES PROCESS
58	CONTACT DETAILS

Quality, Innovation, Excellence.

Bushtec Safari - a brand synonymous with outstanding quality, sheer luxury, innovative design and unsurpassed expertise - is a division of the Canvas and Tent Group, who have been manufacturing tents since 1968.

We are proud to offer you over 50 years of knowledge which sets us apart from our competitors and has established us as the leading tent manufacturer and supplier to the military, humanitarian organizations, game reserves, safari destinations, holiday resorts and adventurers, both locally and internationally.

Situated at the foothills of the Drakensberg Mountains in Ladysmith, South Africa, our state-of-the-art factory is dedicated and committed to setting new standards in manufacturing.

Worldwide, our products are designed to impress and built to last. These standards enable us to offer peace-of-mind through our global distribution network.

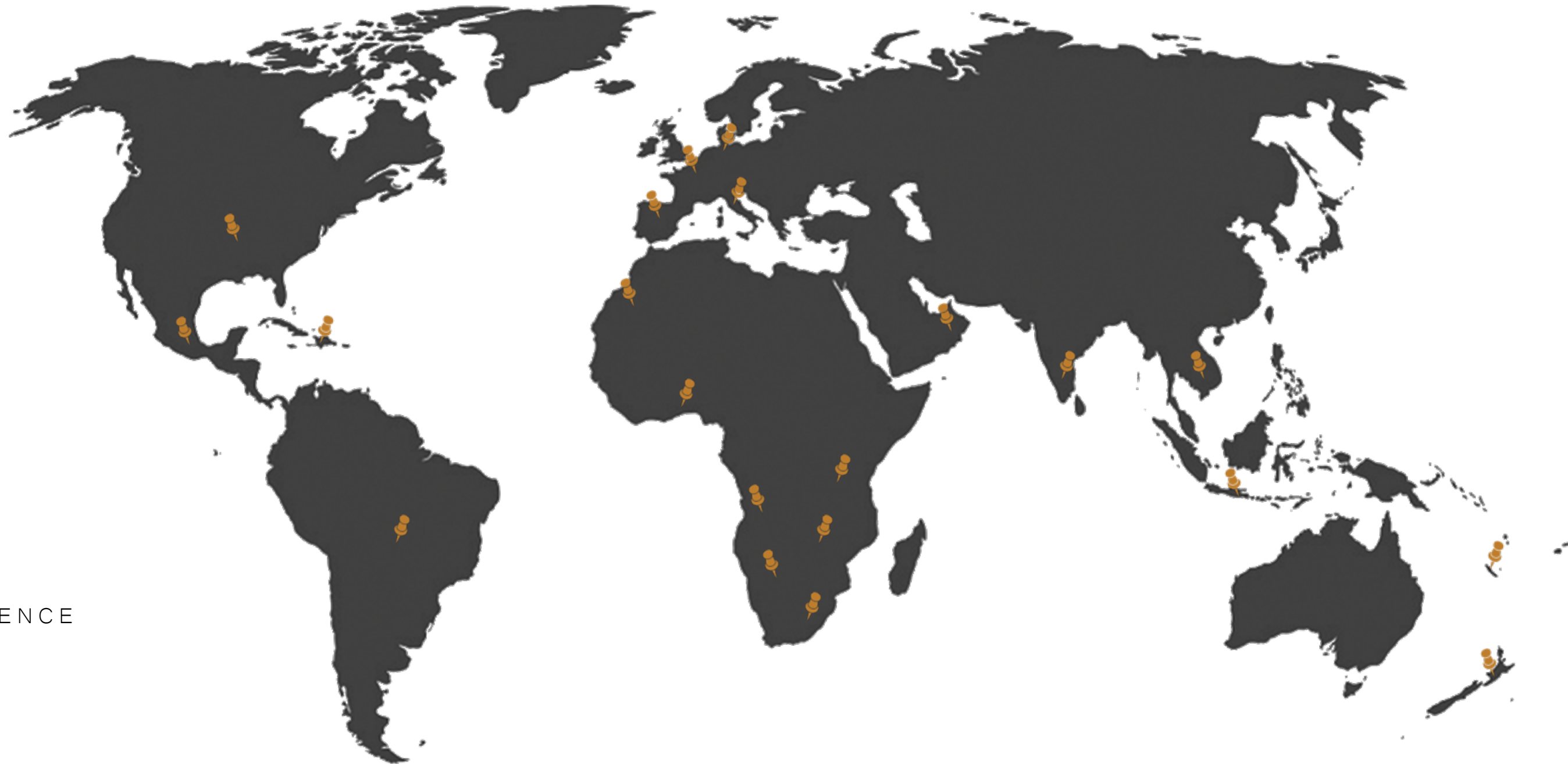


04 INTRODUCTION

“World renowned, trusted & respected.”

05

OUR PRESENCE



06 CONTINENTS

53 COUNTRIES

+ 1000 CAMPS GLOBALLY



08

LUXURY TENT RANGE



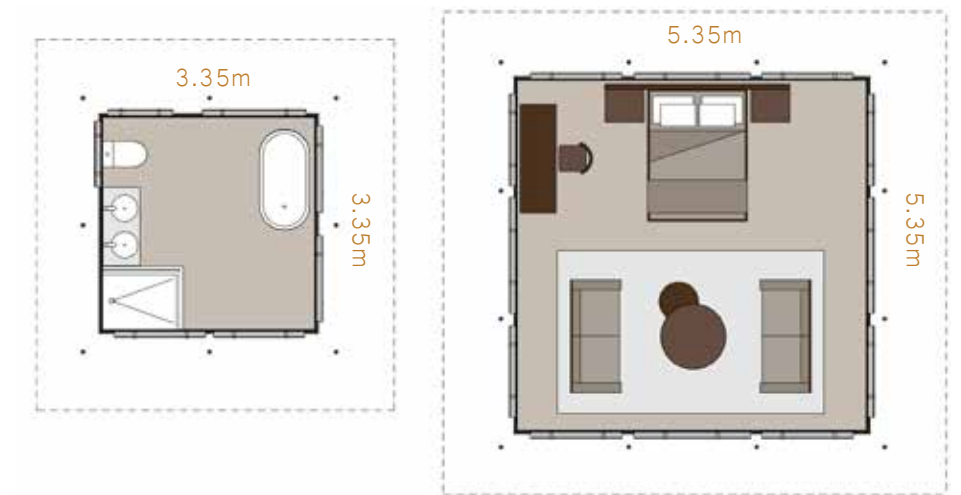
LUXURY TENT | *Bali*

Standard features

- Mild steel powder coated frame
- Canvas flysheet
- Canvas tent body – 550 gsm Ripstop canvas
- Inner ceiling
- Curtains
- Square tubing, body poles & webbing straps

Standard size

28.6 m² / 307.9 ft² floor area
 11.2 m² / 120.6 ft² floor area





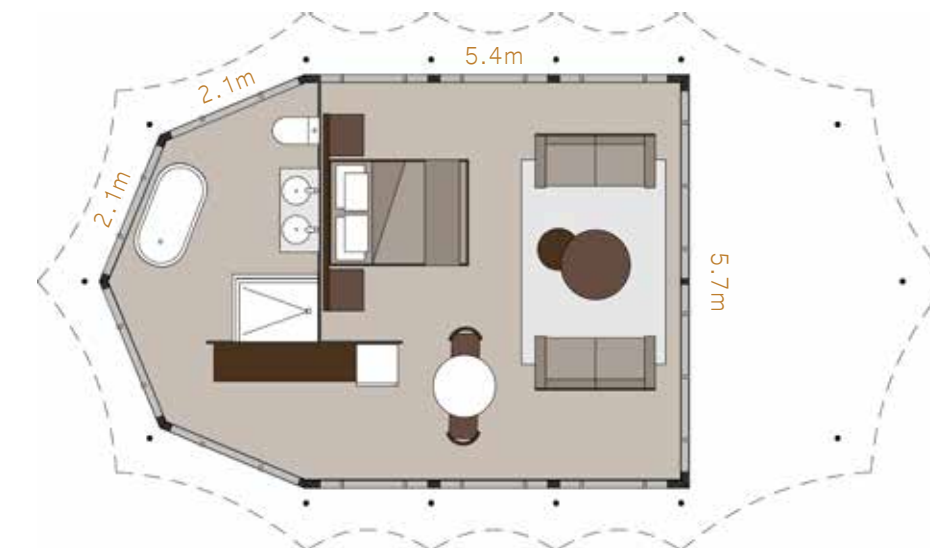
LUXURY TENT | *Jama*

Standard features

- Mild steel powder coated frame
- Shade net flysheet
- PVC flysheet
- Canvas tent body – 550 gsm Ripstop canvas
- Inner ceiling
- Curtains
- Square tubing, body poles & webbing straps

Standard size

42 m² / 452.1 ft² floor area





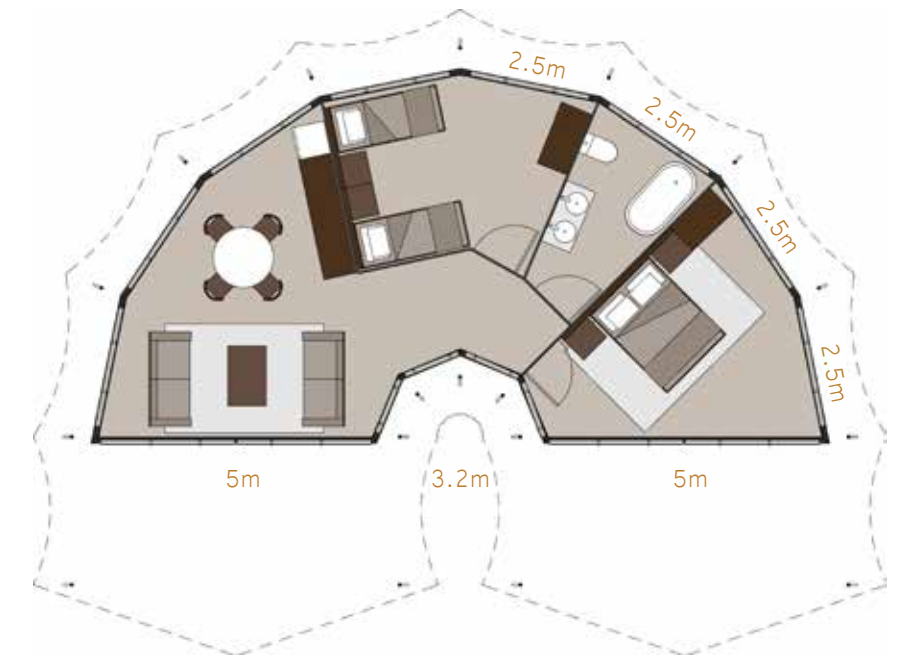
LUXURY TENT | *Jabuleta*

Standard features

- Mild steel powder coated frame
- Shade net flysheet
- PVC flysheet
- Canvas tent body – 550 gsm Ripstop canvas
- Inner ceiling
- Curtains
- Square tubing, body poles & webbing straps

Standard size

63.2 m² / 680.3 ft² floor area





© Custom



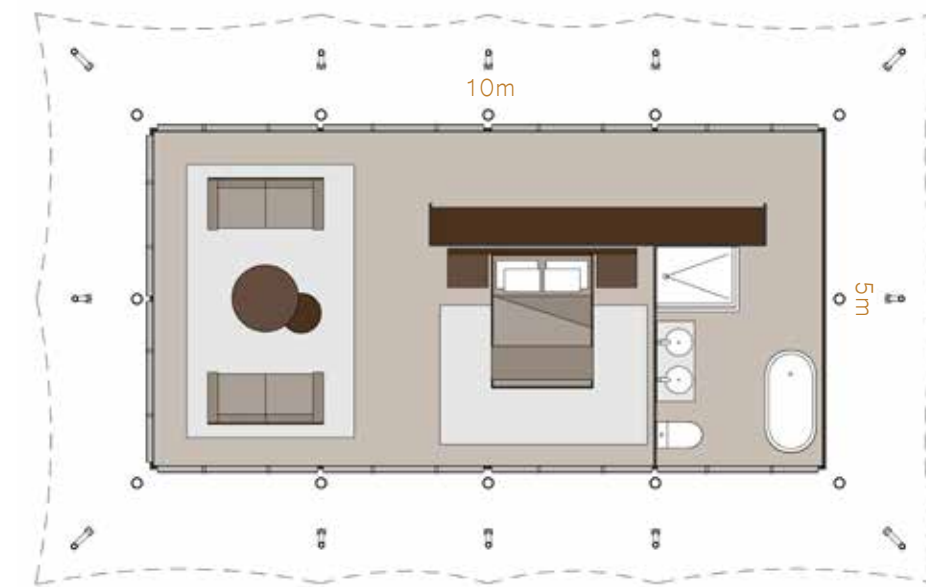
LUXURY TENT | *Ijuba*

Standard features

- Mild steel powder coated frame
- Canvas flysheet
- Canvas tent body - 550 gsm Ripstop canvas
- Inner ceiling
- Curtains
- Square tubing, body poles & webbing straps

Standard size

50 m² / 538.2 ft² floor area





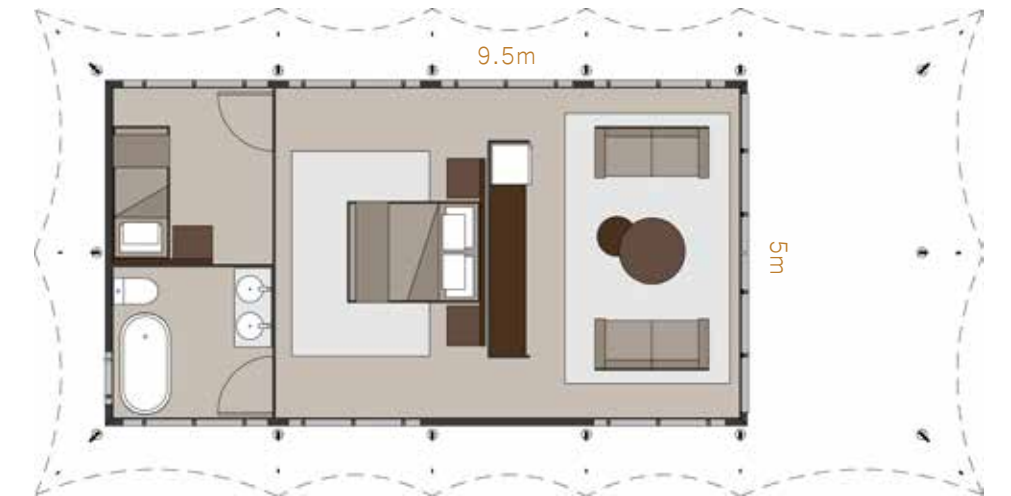
LUXURY TENT | *Java*

Standard features

- Mild steel powder coated frame
- Timber outriggers
- Shade net flysheet
- Canvas flysheet
- Canvas tent body - 550 gsm Ripstop canvas
- Inner ceiling
- Curtains
- Square tubing, body poles & webbing straps

Standard size

47.5 m² / 511.3 ft² floor area





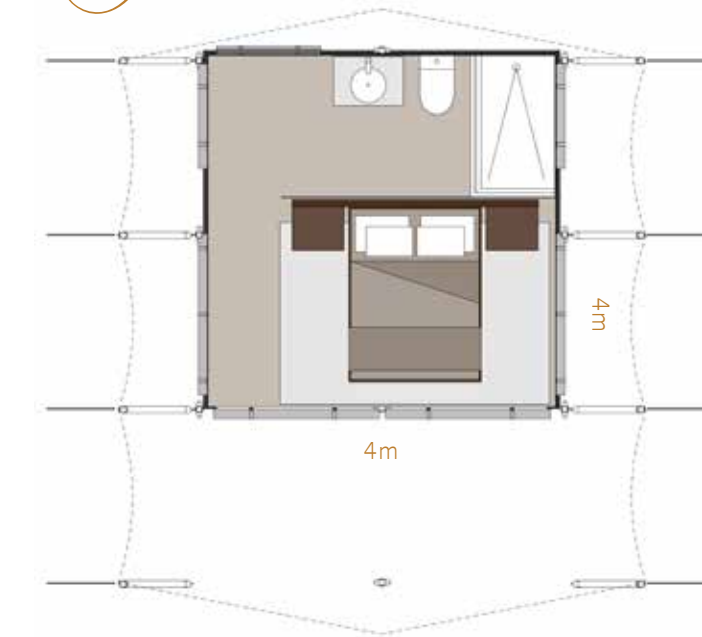
LUXURY TENT | *Lyon*

Standard features

- Laminated Saligna 76mm turned poles
- Powder coated brackets
- Canvas flysheet
- Canvas tent body – 550 gsm Ripstop canvas
- Sewn-in PVC floor
- Inner ceiling
- Curtains
- Square tubing, body poles & webbing straps

Standard size

16 m² / 172.2 ft² floor area





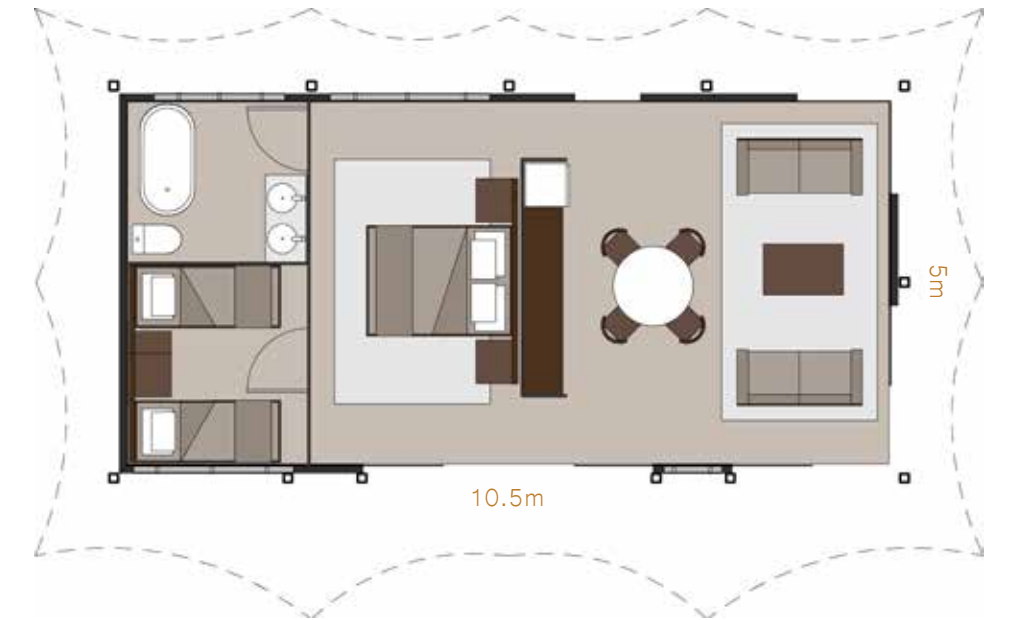
LUXURY TENT | *Mahe*

Standard features

- Pine laminated beam support structure
- Mild steel powder coated frame
- Ferrari PVC flysheet
- Canvas tent body - 550 gsm Ripstop canvas
- Inner ceiling
- Curtains
- Square tubing, body poles & webbing straps

Standard size

52.5 m² / 565.1 ft² floor area





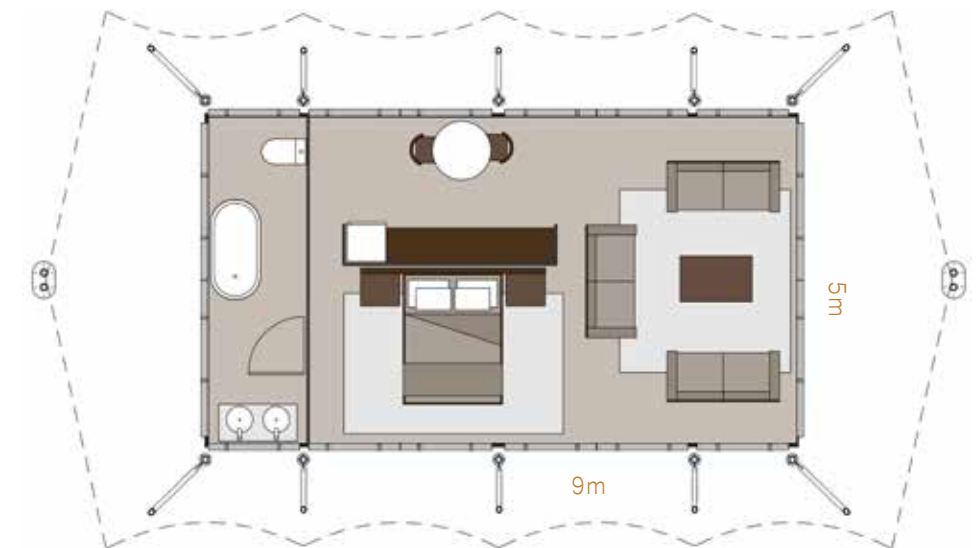
LUXURY TENT | *Serengeti*

Standard features

- Pine laminated poles with turned gum pole outriggers
- Mild steel corners and brackets
- Canvas flysheet
- Canvas tent body – 550 gsm Ripstop canvas
- Inner ceiling
- Curtains
- Square tubing, body poles & webbing straps

Standard size

45 m² / 484.38 ft² floor area





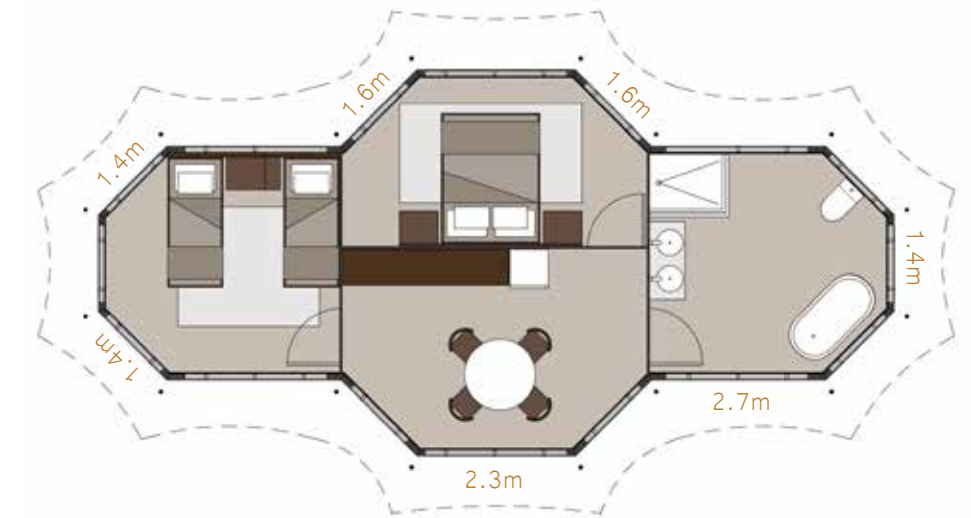
LUXURY TENT | *Shaka*

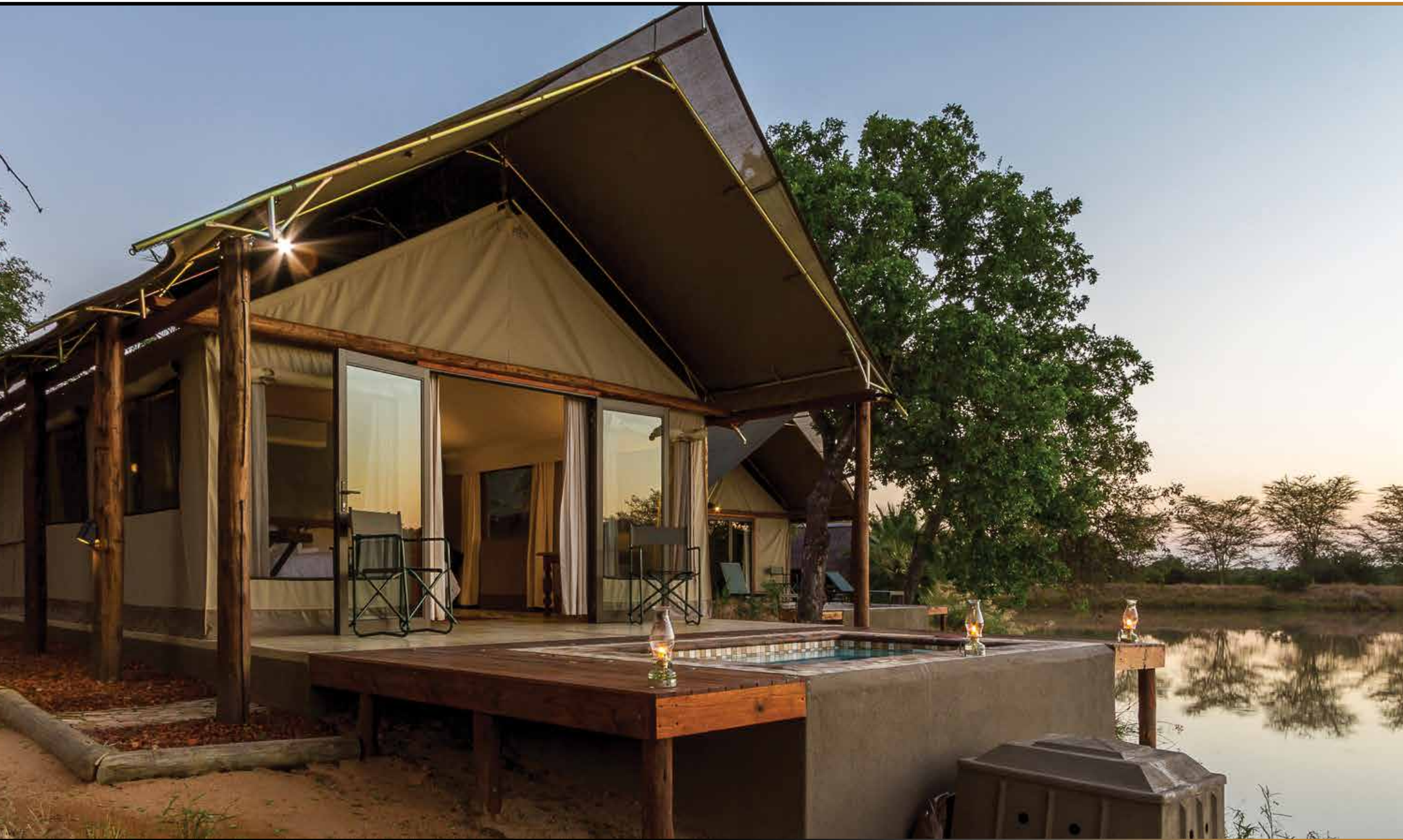
Standard features

- Mild steel powder coated frame
- PVC flysheet
- Shade net flysheet
- Canvas tent body - 550 gsm Ripstop canvas
- Inner ceiling
- Curtains
- Square tubing, body poles & webbing straps

Standard size

47 m² / 505.9 ft² floor area





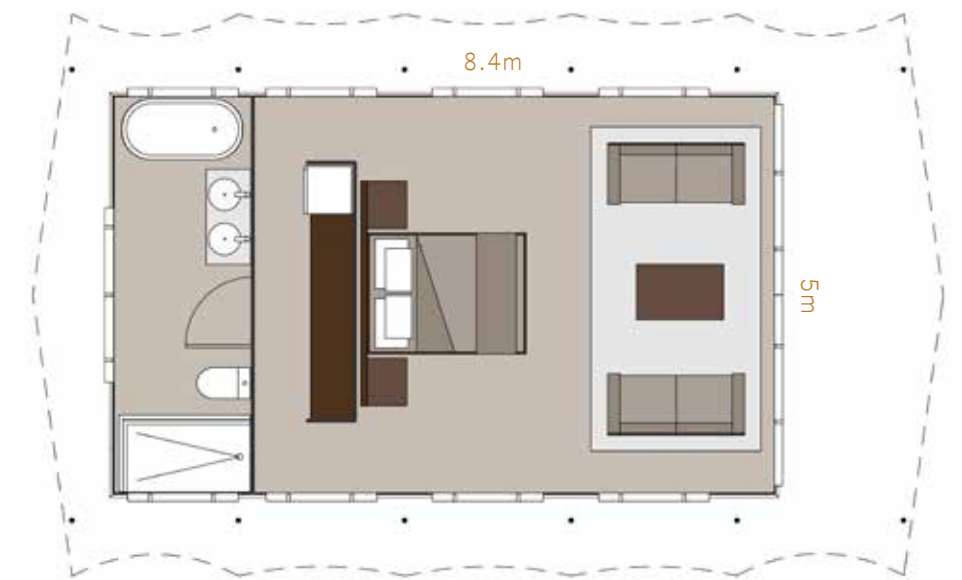
LUXURY TENT | *Springbok*

Standard features

- Mild steel powder coated frame
- Gum-pole ring-beam structure (provided by client)
- PVC flysheet
- Shade net flysheet
- Canvas tent body - 550 gsm Ripstop canvas
- Inner ceiling
- Curtains
- Square tubing, body poles & webbing straps

Standard size

42 m² / 452.1 ft² floor area





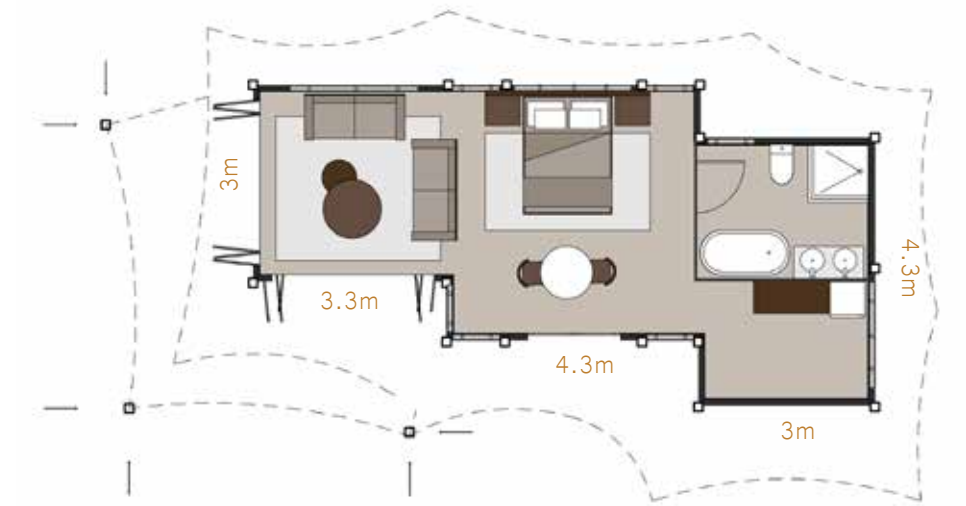
LUXURY TENT | *Tshokwane*

Standard features

- Mild steel powder coated frame
- Ferrari PVC flysheet
- Two tensile Ferrari PVC awnings
- Canvas tent body – 550 gsm Ripstop canvas
- Inner ceiling
- Curtains
- Square tubing, body poles & webbing straps

Standard size

39.8 m² / 428.4 ft² floor area





LUXURY TENT | *Standard Meru*

Standard features

Mild steel powder coated frame

PVC flysheet

Shade net flysheet

Canvas tent body – 550 gsm Ripstop canvas

Square tubing, body poles & webbing straps

Standard Meru available in 4 leg; 5 leg or 6 leg

Standard body sizes available

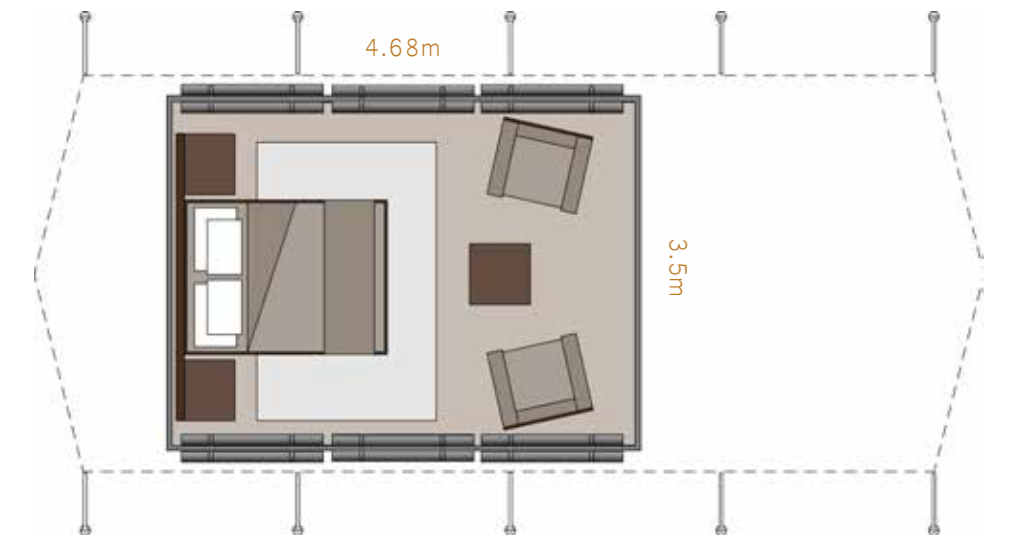
3.5 x 3.5m – 12.3 m² / 131.9 ft² floor area

4.68 x 3.5m – 16.4 m² / 176.4 ft² floor area

5.22 x 3.5m – 18.3 m² / 196.7 ft² floor area

Optional bathroom

2.1 x 3.5m – 7.4 m² / 79.7 ft² floor area





LUXURY TENT | *Budget Meru*

Standard features

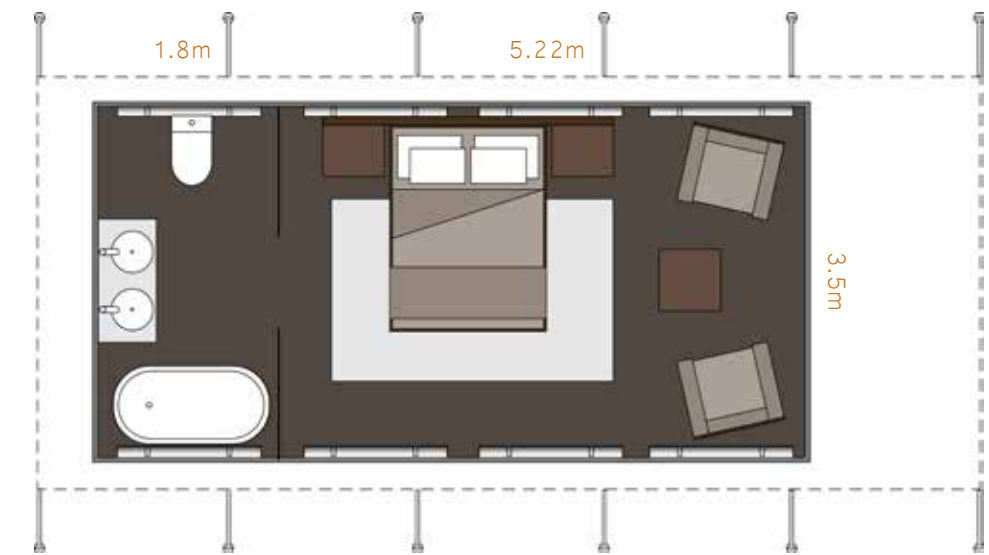
- Mild steel powder coated frame
- Canvas flysheet
- Sewn-in PVC floor
- Canvas tent body - 440 gsm Ripstop canvas
- Includes bathroom with canvas walls & shadenet roof
- Roll-up door between bedroom and bathroom
- Budget Meru available in 5 leg or 6 leg

Standard body sizes available

- 3.5 x 3.5m - 12.3 m² / 131.9 ft² floor area
- 5.22 x 3.5m - 18.3 m² / 196.7 ft² floor area

Standard bathroom

- 1.8 x 3.5m - 6.3 m² / 67.8 ft² floor area



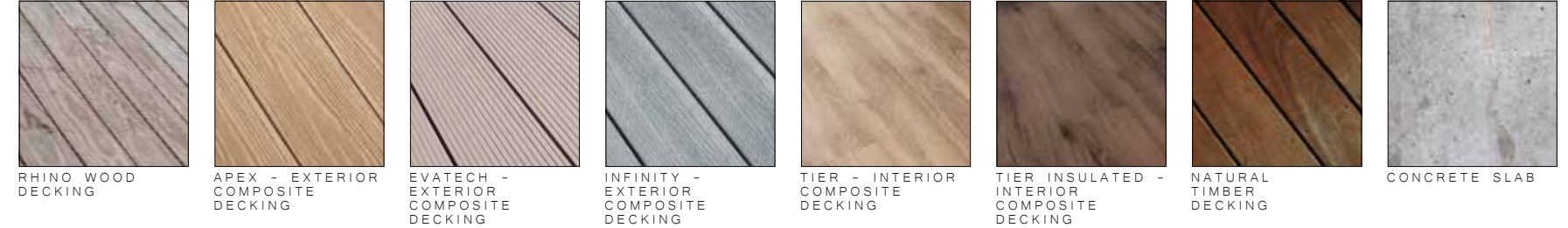
35

CUSTOMIZATIONS

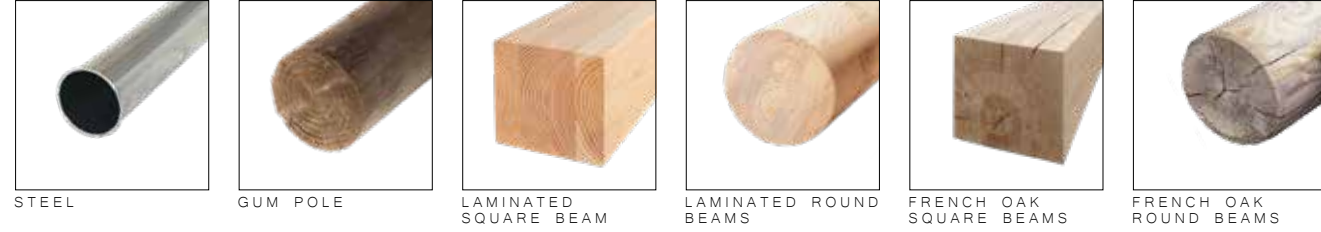
ROOF FRAMEWORK OPTIONS



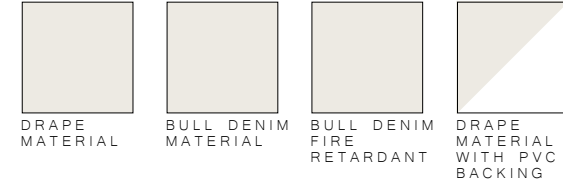
FLOORING OPTIONS



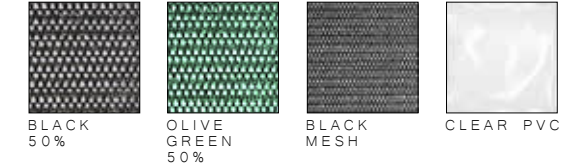
RINGBEAMS, UPRIGHTS & OUTRIGGER OPTIONS



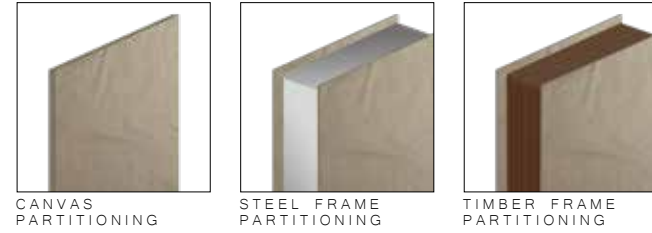
CEILING LINERS & CURTAIN OPTIONS



WINDOW NETTING COLOUR OPTIONS



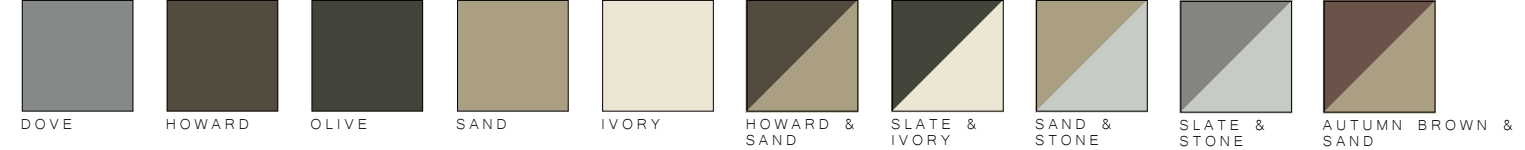
INTERNAL PARTITIONING OPTIONS



CANVAS BODY OPTIONS



CANVAS COLOUR OPTIONS (550GSM) (LIMITED TO MINIMUM ORDER)



WINDOW OPTIONS



DOOR OPTIONS



PVC FLYSHEET COLOUR OPTIONS



SHADE NET FLYSHEET COLOUR OPTIONS



forest villa

Nestled into the dense woodland landscape of Belgium, our Shaka tent becomes the perfect accommodation suite. Allowing one to authentically connect with nature while supporting conservation efforts in the area.

With the use of our low impact tent structures; electrical; water purification and sewerage systems, we provide not only the perfect integrated solutions for your ecotravel destination, but also a cozy and luxurious experience for your guests.

No matter your conversational obligations, ensure your unique vision comes to life using our environmentally friendly luxury range tents.



37

ENDLESS OPPORTUNITIES



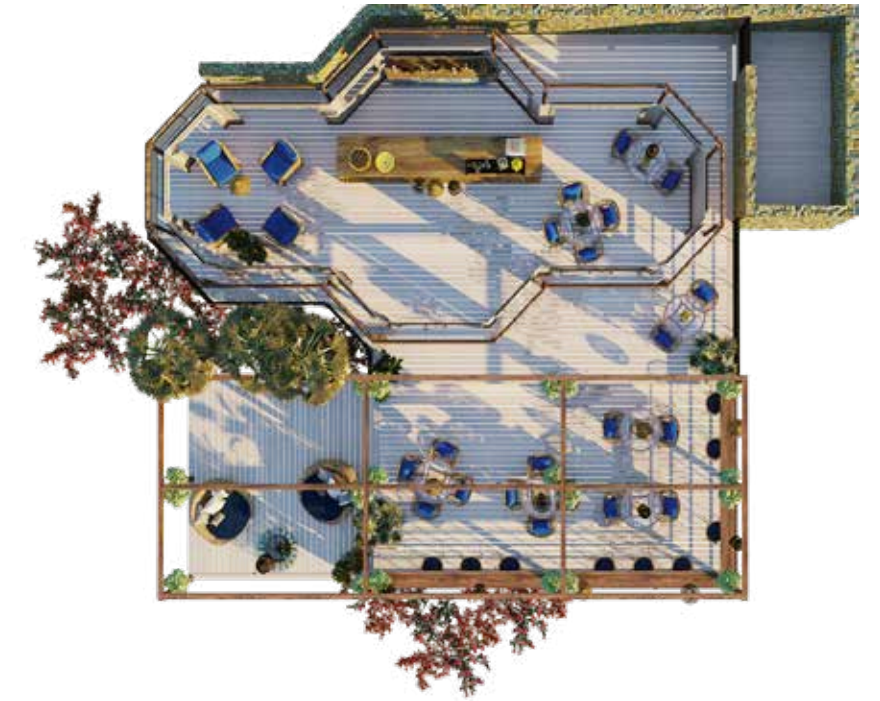


desert spa

Featured above is our Shaka tent, designed as a luxury resort spa. Our tents are highly customizable to meet your every requirement. With the integration of our insulated canvas, shade-net flysheet, timber door, double-glazed glass windows and a/c system we are able to provide a comfortable and thermally efficient tented solution to suite the hot, arid climate of the Moroccan dunes.

No matter the application, ensure your unique vision comes to life using our customizable luxury tents.





beachfront bar

Placed on a tropical beachfront in Bali, our Shaka tent becomes the perfect solution for a resort beach bar. Our standard roll-up canvas windows and doors seamlessly continue the beach atmosphere into the bar.

Our tent structure is designed with a dual purpose, to facilitate a fresh breeze to cool down the tent providing a comfortable experience within and to withstand rigorous wind loads for those tropical storms. In addition our canvas is water-resistant, rot-proof, uv-resistant and colour-fast, designed to withstand the natural elements.

No matter the environment, ensure your unique vision comes to life using our durable luxury tents.



bush lodge conference

Located in the bushveld of Botswana, our Shaka tent demonstrates the ease at which one can create a sophisticated space for corporate getaway meetings at your bush lodge. Our standard luxury range tents are expertly designed, are quick and easy to install and are suitable for many purposes. Thus ensuring a convenience that is difficult to surpass. No matter your requirements, ensure your unique vision comes to life using our convenient luxury tents.



45

PORTFOLIO

a Glimpse of Luxury...



WILDERNESS SAFARIS, KWETSANI CAMP - OKAVANGO DELTA, BOTSWANA



&BEYOND, NGALA TENTED CAMP
- TIMBAVATI, SOUTH AFRICA



MDLULI SAFARI LODGE - HAZYVIEW, SOUTH AFRICA



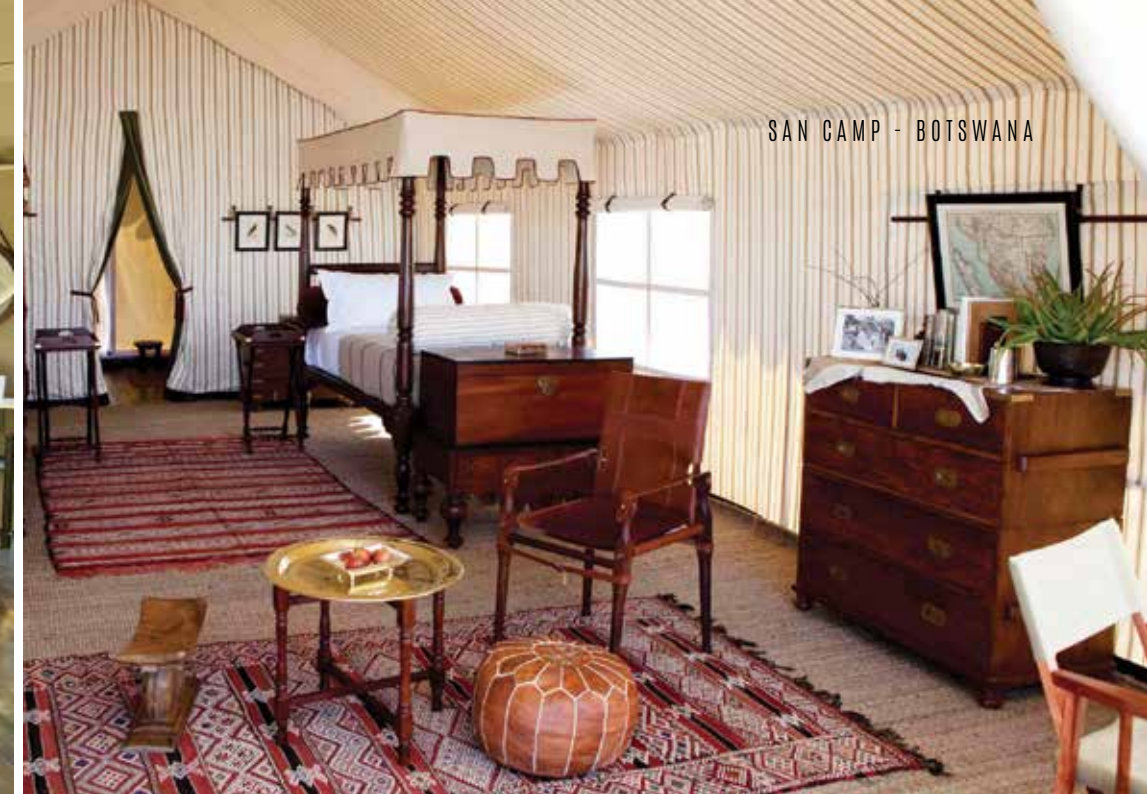
KARIEGA GAME RESERVE - SETTLERS DRIFT, SOUTH AFRICA



WILDERNESS SAFARIS, ABU CAMP
OKAVANGO DELTA, BOTSWANA



FINFOOT LAKE RESERVE - RUSTENBURG, SOUTH AFRICA



SAN CAMP - BOTSWANA



ISLAND CAMP - SEYCHELLES



KINGFISHER RETREAT - KALBA, UNITED ARAB EMIRATES



MENJANGAN DYNASTY BEACH RESORT - NORTH BALI, INDONESIA



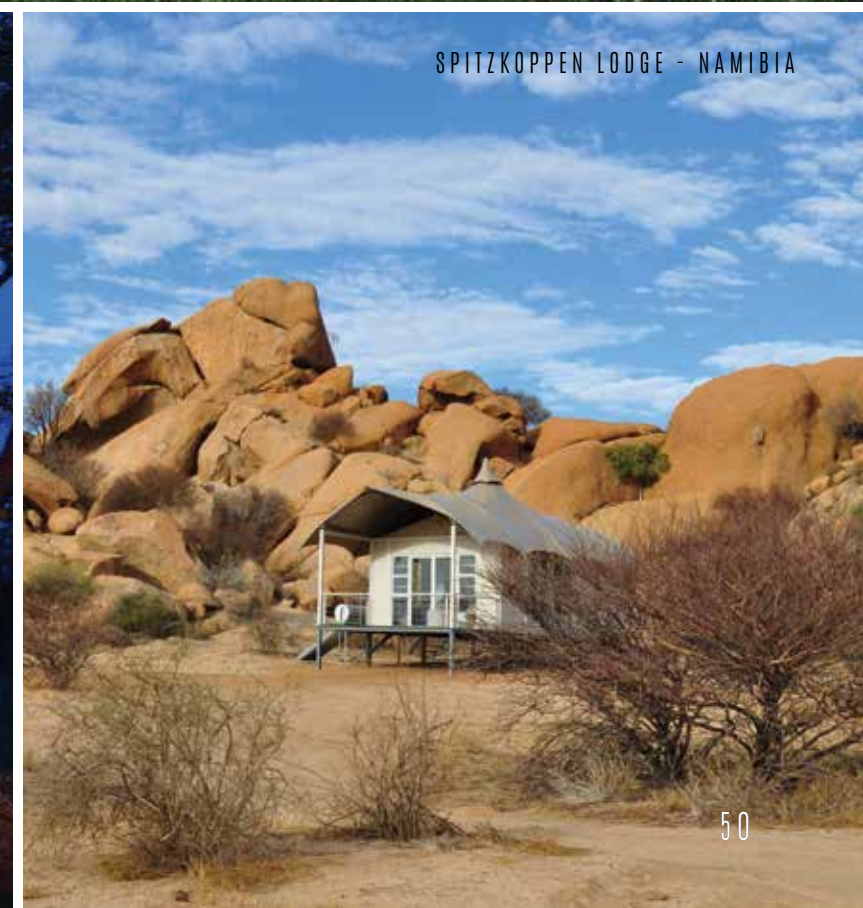
OLD DRIFT LODGE - VICTORIA FALLS, ZIMBABWE



SAN CAMP - BOTSWANA



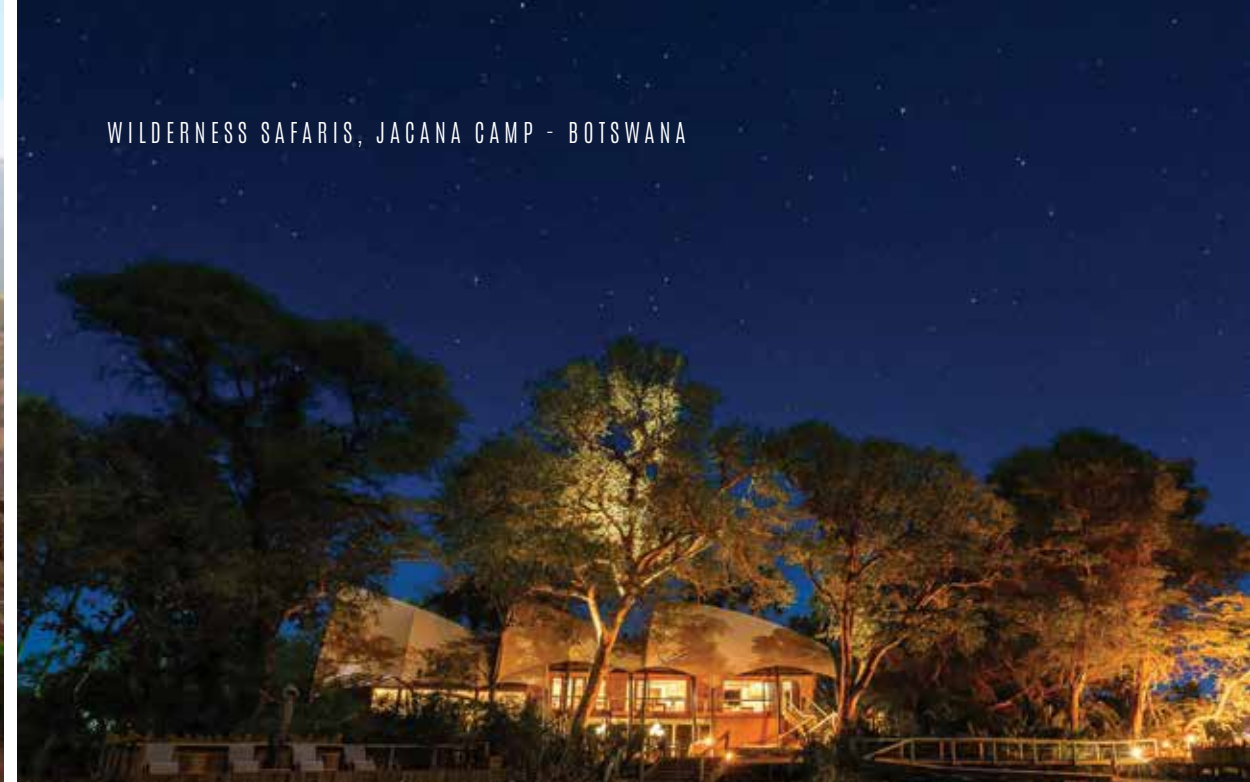
DIE BOSKAMP PRIVATE GAME LODGE AND SPA - MARBLE HALL, SOUTH AFRICA



SPITZKOPPEN LODGE - NAMIBIA



KASBAH TAMADOT - MOROCCO



WILDERNESS SAFARIS, JACANA CAMP - BOTSWANA



SHAMWARI, SINDILE LODGE - EASTERN CAPE, SOUTH AFRICA



51 SIMBAVATI HILLTOP LODGE -
TIMBAVATI, KRUGER, SOUTH AFRICA



RHINO SANDS SAFARI CAMP
- MKUZE, SOUTH AFRICA



1. ROOF

Our structures have up to four layers to optimize durability, ventilation and temperature.

1. Shade net flysheet
2. PVC flysheet
3. Canvas roof
4. Ceiling

2. BODY POLES & WEBBING STRAPS

The canvas tent body is suspended from the steel frame using body poles and webbing straps.

3. MUDFLANCE

A PVC mudflance fixes the canvas wall to the floor to seal and protect the tent from water and dust.

4. WINDOWS

When it comes to windows we make use of small, large or high windows with shade netting to enable ventilation and deter bugs. Outer canvas flaps are used to close windows during rainstorms.

9. MILD STEEL FRAME

Choose between galvanized, powder-coated or stainless steel framing options.

8. HEATING & COOLING

Our tents allow for additional features such as insulated canvas, heating stoves and air-conditioning systems where required.

7. DURABILITY

All our tents are UV-resistant, rot-proof, water resistant and an optional extra can be made fire-retardant. Each tent can be engineered to meet project specific wind & snow load building codes.

6. CANVAS BODY

At Bushtec Safari we make use of the highest quality 550 gsm ripstop canvas for the full tent body to ensure the durability of our tents. In addition, our canvas also undergoes a colour-fastening treatment to minimize colour fading over time.

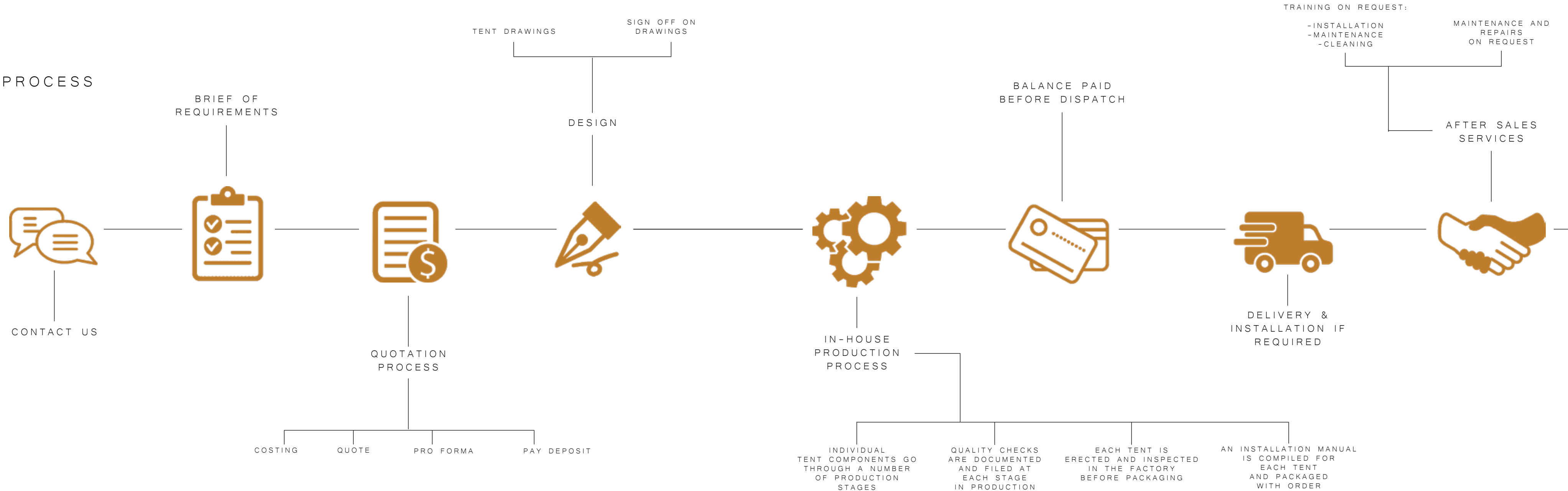
5. DOORS

High quality Velcro and YKK zipper combinations ensure durability and easy maintenance on our canvas doors. Innovative solutions allow for the perfect fitments of hard doors.



55

SALES PROCESS





58

CONTACT DETAILS

Website	www.bushtecsafari.co.za
Email	info@bushtecsafari.co.za
Tel	+27 (0)12 671 1073/1117
Cell	+27 (0)73 332 9725
Fax	+27 (0)12 671 1438
Address	Denel Business Park, Nellmapius Drive, Irene, Pretoria, South Africa.

Bushtec Safari South Africa	Frans Vermaas - frans@canvasandtent.co.za
Canvas and Tent Europe	Marc van den Bosch - marc@lpi.be
Canvas and Tent USA	Gary Flaks - info@bushtecsafari.com
Kalahari Kanvas Botswana	Brett Sinclair - info@kalahari-kanvas.com

Canvas and Tent Manufacturing (Pty) Ltd
 Co. Registration 1996/014167/07
 Vat Reg No. 4500161379

